

## Hybrid Carriers

### FEATURES

Robust design features mechanically keyed component assembly

Integrated single-piece strut / cardguide construction for optimum performance

Modular system allows full flexibility of the size, number, and location of AMC bays

Light weight, extruded aluminum profile

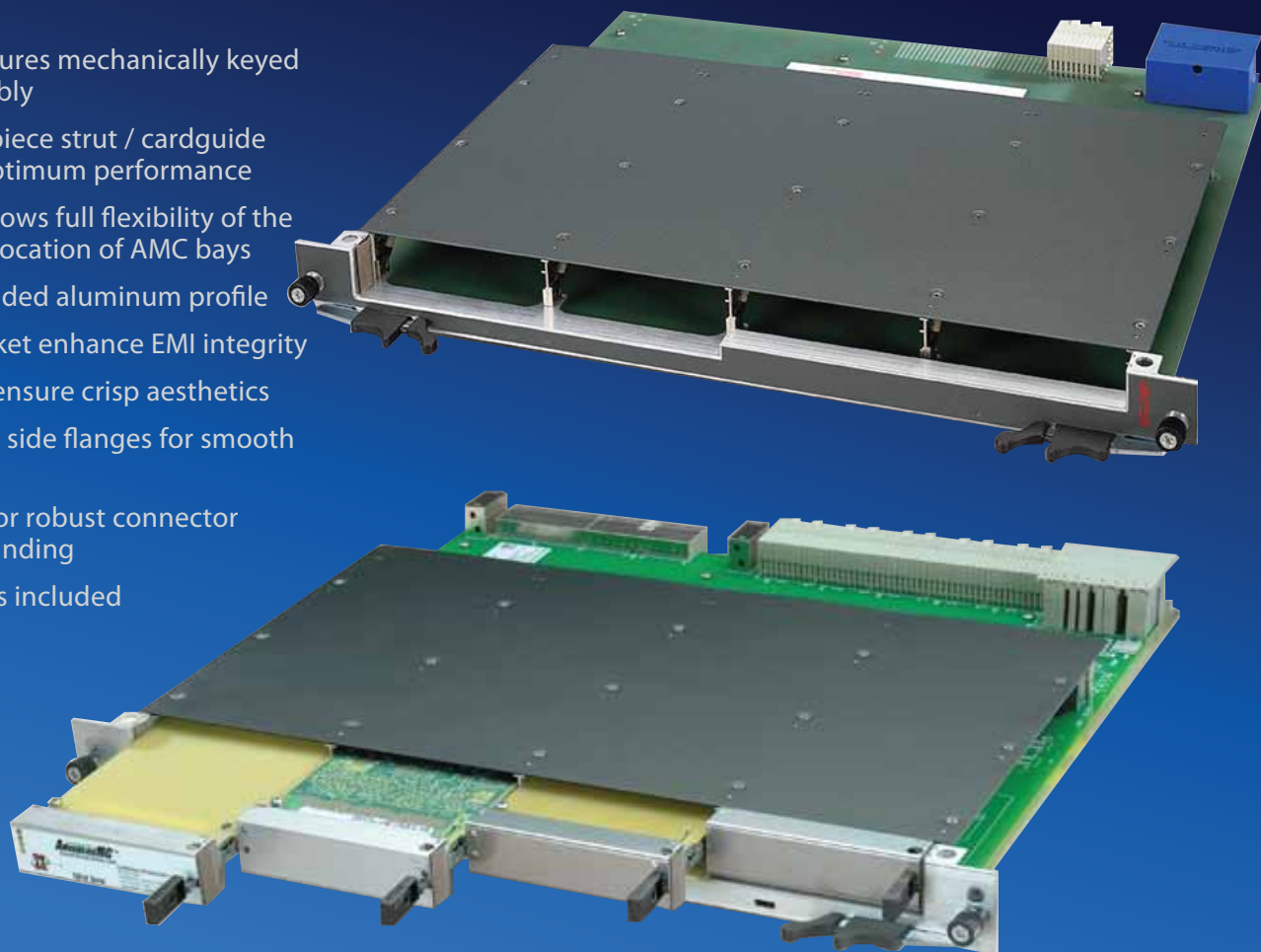
Snag-resistant gasket enhance EMI integrity

Overlay gallery to ensure crisp aesthetics

Tapered lead-in on side flanges for smooth insertion

1.5mm thick face for robust connector retention and grounding

Custom I/O cutouts included



XTech — The Front Panel Source

### RELATED PRODUCTS

ATCA Aluminum Extruded Front Panels

ATCA Filler Panels



### OTHER INFORMATION

Customized to meet your AMC configuration; accepts compact, mid and full size AMC's, 8U 6HP 280MM deep design

Rugged aluminum extruded design and die cast carrier

Includes Southco ATCA style thumbscrews, alignment pins, and ATCA style ejectors

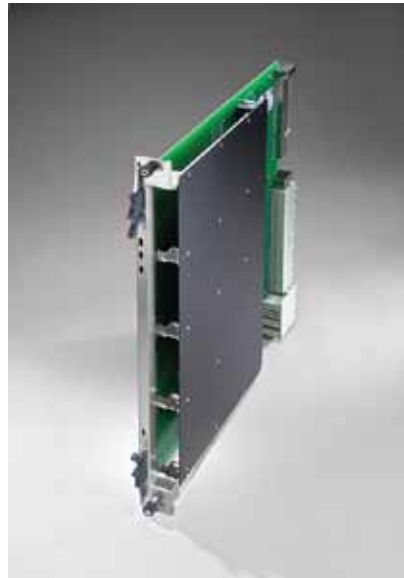
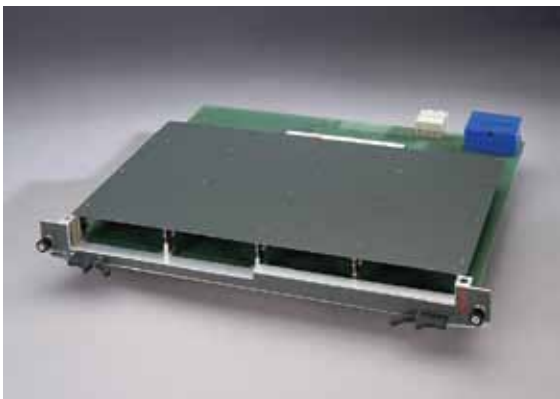
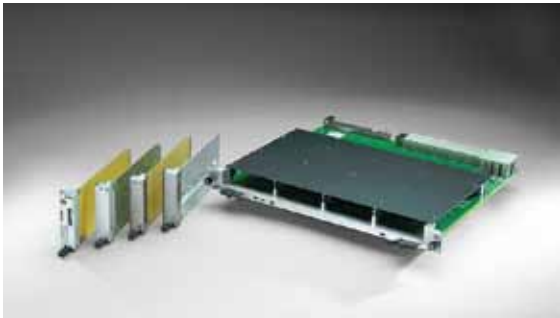
Assembled and ready to attach to your carrier pcb board

Maximum face area available for connector cutouts

XTECH AMC Front Panels are available in full-size, mid-size and compact size (single or double width)

# AdvancedMC™

## Hybrid Carriers



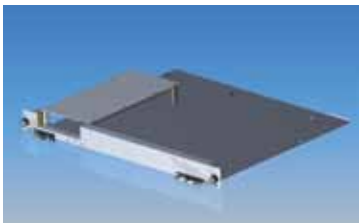
### FINISH SPECIFICATION

- Standard Finish
  - Aluminum - Chromate with Vertical Grain
- Special Finishing Options
  - Powder Coat
  - Anodize/Chromate
  - Special Color Chromating
- Labelling
  - Silkscreening (single or multicolor)
  - Overlays

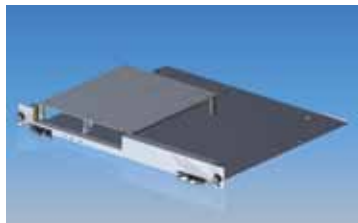
### SPECIFICATION COMPLIANCE

RoHS COMPLIANT  
PICMG AMC.0

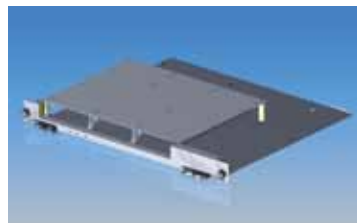
### XTech AMC mid-size carrier specifications and configurations



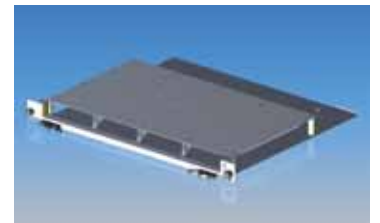
1 Bay Carrier



2 Bay Carrier



3 Bay Carrier



4 Bay Carrier

Front Panel	Extruded aluminum w/ trivalent chromate
Struts	Zamak 3 w/ zinc chromate and powder coat
C.S. Covers	Powder coated steel
Fasteners/Hardware	Stainless steel
Ejectors	Southco - ATCA style (other handles upon request)
EMI Gasket	Fabric over Foam
Thumbscrews	Southco - ATCA style
Shipping	Completey assembled - individually packaged



sales@xtech-outside.com  
358 North Street, Randolph, MA 02368  
www.XTech-Outside.com  
US Sales: 1-888-444-1644  
China Sales: 86-592-5765365