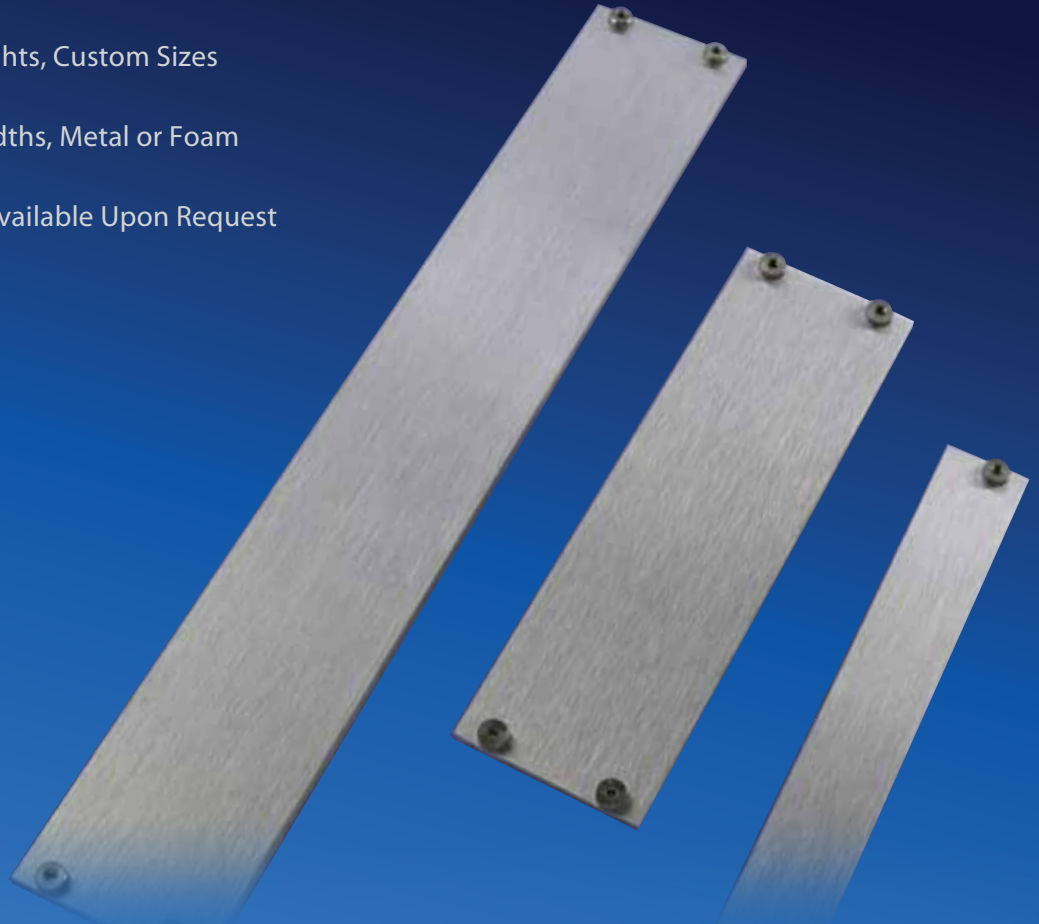


Compact PCI / VME64x / VXS Filler Panels IEEE 1101.10 Compliant



FEATURES

- Standard 3U and 6U Board Heights, Custom Sizes Available Upon Request
- Standard 4HP, 5HP and 8HP Widths, Metal or Foam Gasket Options
- Overlay or Silkscreen Options Available Upon Request



XTech — The Front Panel Source

Standard Compact PCI / VME64x / VXS Filler Panels Now Available from Stock!

X P R E S S F R O M S T A R T T O F I N I S H

Drawings Online for Easy Access / Modification
Filler Panels are Assembled and Ready to Go; Standard Sizes Available from Stock

Contact our Sales Department by Phone at 1-888-444-1644 or by Email at xpresssales@xtech-outside.com For More Information



Visit www.xtech-outside.com



WWW.XTECH-OUTSIDE.COM | 1-888-444-1644

Compact PCI / VME64x / VXS Filler Panel Assemblies and Components

STANDARD ASSEMBLIES AND COMPONENTS



FILLER PANEL ASSEMBLIES STANDARD SIZES

- 3 U - 4 HP
- 3 U - 8 HP
- 6 U - 4 HP
- 6 U - 8 HP

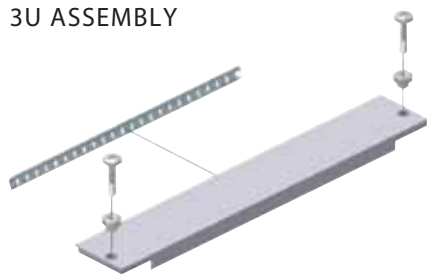
SPECIAL SIZES
AVAILABLE UPON REQUEST

STANDARD CONFIGURATIONS

All Standard Sizes in Stock!

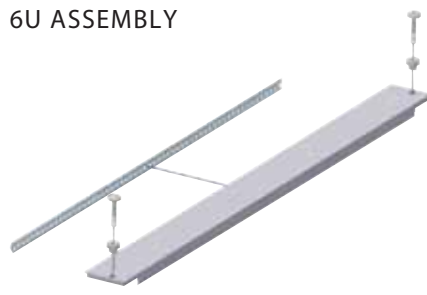
Modifications are Supported by the XTech XPRESS program!

3U ASSEMBLY



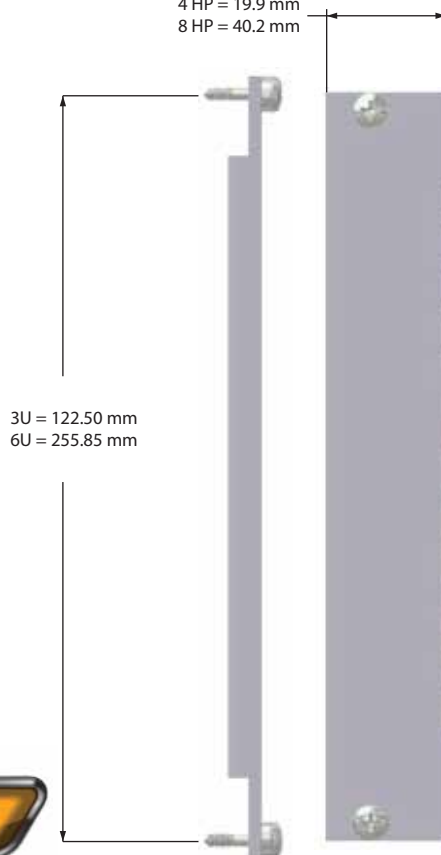
QTY 4HP	QTY 8HP	ITEM DESCRIPTION
1	1	FILLER PANEL with CLEAR CHROMATE FINISH
1	1	EMI GASKET (METAL or FOAM)
2	4	SCREW SLEEVE
2	4	FASTENING SCREW

6U ASSEMBLY



QTY 4HP	QTY 8HP	ITEM DESCRIPTION
1	1	FILLER PANEL with CLEAR CHROMATE FINISH
1	1	EMI GASKET (METAL or FOAM)
2	4	SCREW SLEEVE
2	4	FASTENING SCREW

4 HP = 19.9 mm
8 HP = 40.2 mm



3U = 122.50 mm
6U = 255.85 mm

	SCREW SLEEVE CLINCH FASTENER - XTECH# 125904 Pkg. of 10 Round - XTECH# 125836 Pkg. of 100 Round - XTECH# 125598 Pkg. of 100 Oblong
	COLLAR SCREW PHS-M2.5X12mm SCREW - XTECH# 125905 Pkg. of 10 - XTECH# 125838 Pkg. of 100
	FOAM EMI GASKET FABRIC OVER FOAM CUT TO LENGTH 3U - XTECH# 125924 6U - XTECH# 125925 Pkg. of 10
	METAL EMI GASKET STAINLESS STEEL CUT TO LENGTH 3U - XTECH# 125920 6U - XTECH# 125921 Pkg. of 10



U	HP	GASKET	Part Number
3U	4HP	FOAM	125695
3U	4HP	METAL	125697
3U	8HP	FOAM	125700
3U	8HP	METAL	125701
6U	4HP	FOAM	125698
6U	4HP	METAL	125699
6U	8HP	FOAM	125702
6U	8HP	METAL	125703

Filler Panel
Assemblies as
Described Above



sales@xtech-outside.com
358 North Street, Randolph, MA 02368
www.XTech-Outside.com
US Sales: 1-888-444-1644
China Sales: 86-592-5765365