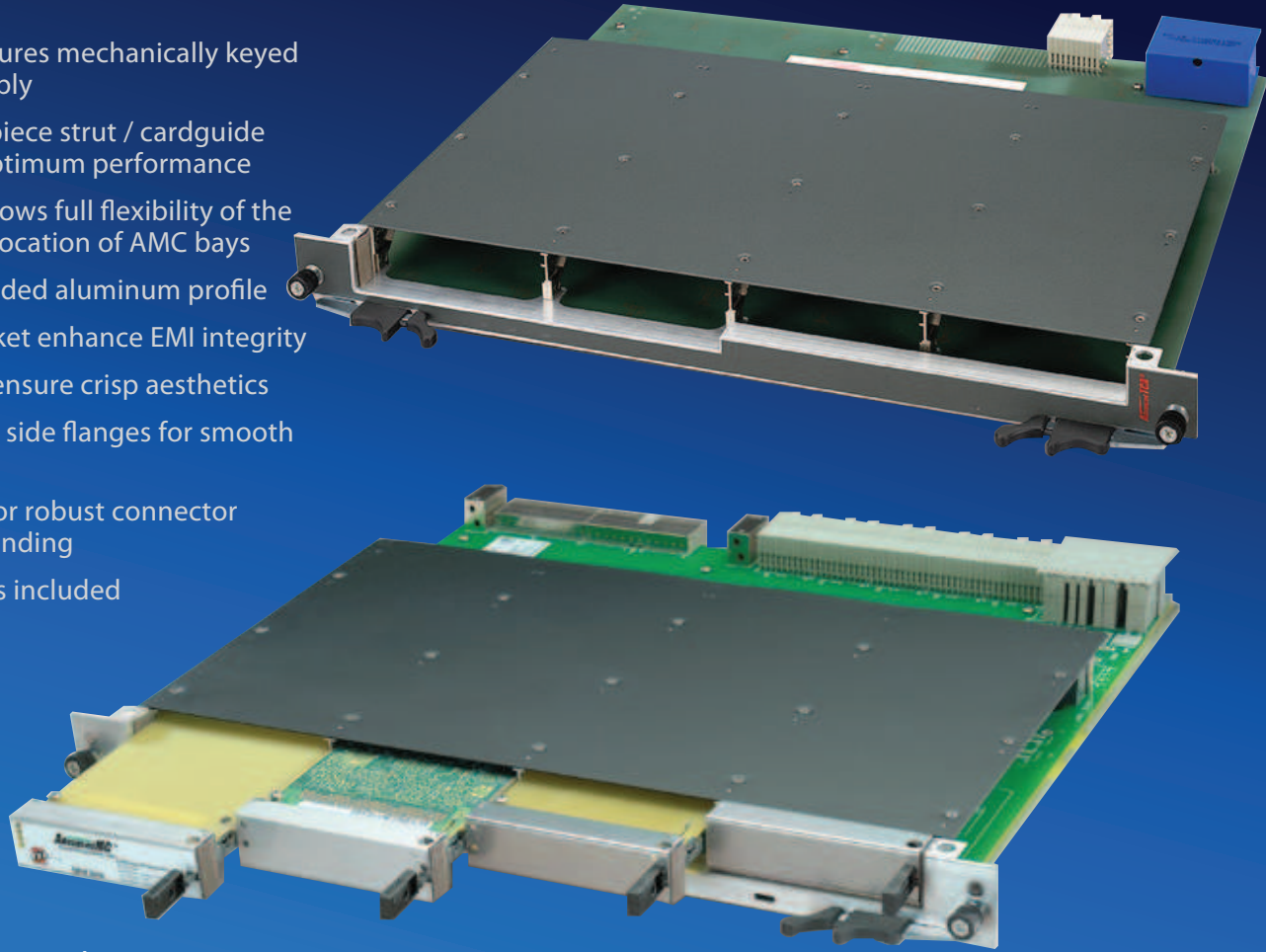


Hybrid Carriers

FEATURES

- Robust design features mechanically keyed component assembly
- Integrated single-piece strut / cardguide construction for optimum performance
- Modular system allows full flexibility of the size, number, and location of AMC bays
- Light weight, extruded aluminum profile
- Snag-resistant gasket enhance EMI integrity
- Overlay gallery to ensure crisp aesthetics
- Tapered lead-in on side flanges for smooth insertion
- 1.5mm thick face for robust connector retention and grounding
- Custom I/O cutouts included



XTech — The Front Panel Source

RELATED PRODUCTS

ATCA Aluminum Extruded Front Panels

ATCA Filler Panels



XTech AMC Front Panels are available in full-size, mid-size and compact size (single or double width)

OTHER INFORMATION

Customized to meet your AMC configuration; accepts compact, mid and full size AMC's, 8U 6HP 280MM deep design

Rugged aluminum extruded design and die cast carrier

Includes Southco ATCA style thumbscrews, alignment pins, and ATCA style ejectors

Assembled and ready to attach to your carrier pcb board

Maximum face area available for connector cutouts

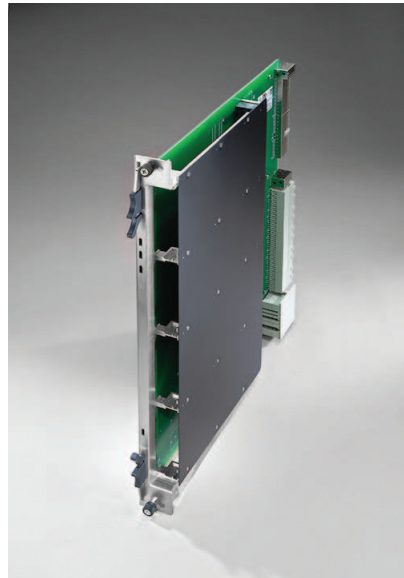
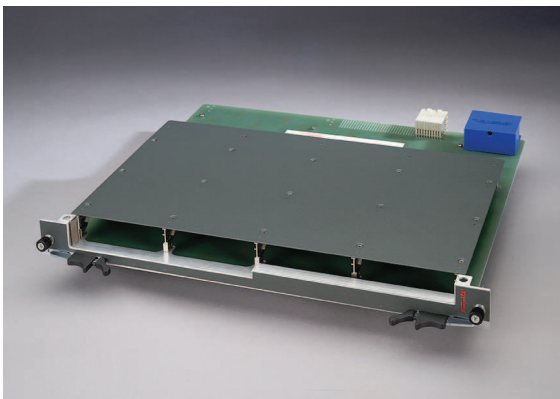
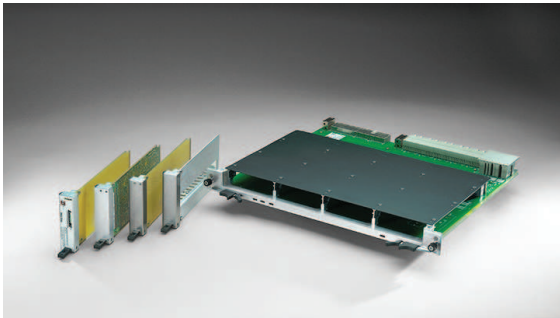


Visit www.xtech-outside.com



AdvancedMC™

Hybrid Carriers



FINISH SPECIFICATION

Standard Finish

Aluminum - Chromate with Vertical Grain

Special Finishing Options

Powder Coat
Anodize/Chromate
Special Color Chromating

Labeling

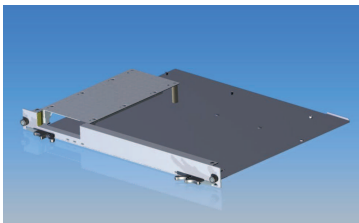
Silkscreening (single or multicolor)
Overlays

SPECIFICATION COMPLIANCE

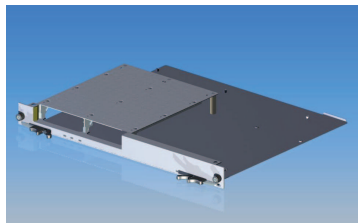
RoHS COMPLIANT

PICMG AMC.0

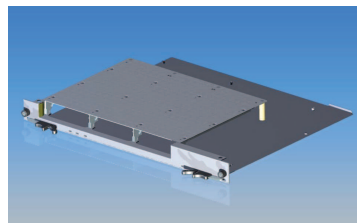
XTech AMC mid-size carrier specifications and configurations



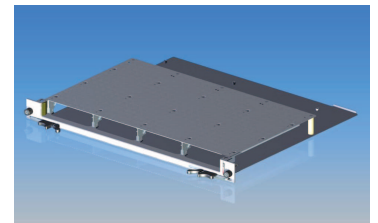
1 Bay Carrier



2 Bay Carrier



3 Bay Carrier



4 Bay Carrier

Front Panel	Extruded aluminum w/ trivalent chromate
Struts	Zamak 3 w/ zinc chromate and powder coat
C.S. Covers	Powder coated steel
Fasteners/Hardware	Stainless steel
Ejectors	Southco - ATCA style (other handles upon request)
EMI Gasket	Fabric over Foam
Thumbscrews	Southco - ATCA style
Shipping	Completely assembled - individually packaged



sales@xtech-outside.com
358 North Street, Randolph, MA 02368
www.XTech-Outside.com
US Sales: 1-888-444-1644
China Sales: 86-592-5765365