

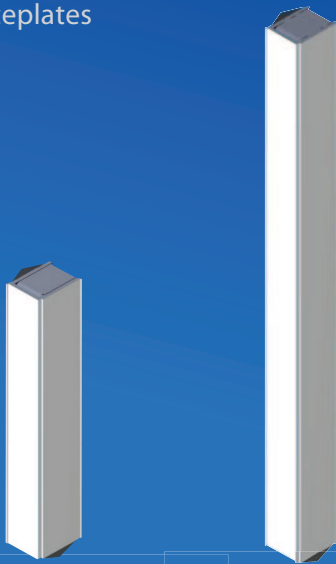


AMC 2HP Extender

Adapts Mid Size Panels to Full Size Slots

FEATURES

- Simple Assembly - Robust Construction
- Provides Configuration Flexibility; Allows User to Standardize on One Size AMC - but Provides Flexibility to Adapt to Other Sizes
- Snag-Resistant Gasket Curb
- Assembled and Ready to Attach to Your Module
- Can be Used with Both Extruded Aluminum and Sheet Metal Faceplates



Single 2HP Extender

Double 2HP Extender



XTech — The Front Panel Source

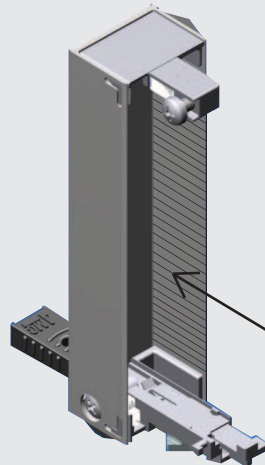
Specifications

Front Panel - Extruded Aluminum - Available in Steel Upon Request

EMI Gaskets - Fabric Over Foam

Overlay - 0.25mm Velvet Matte Polycarbonate Standard Overlay comes in XTECH Silver, Custom Options Available

Specification Compliance - PICMG AMC.0, uTCA.0, UL94-V0, RoHS Compliant



To accommodate varying component envelopes, retaining clips may be relocated along cross hatched surface.

Part #	Description	H x W x D	Qty.
125432	Single 2HP Extender	73.8mm x 10.5mm x 13.6mm	10
125434	Double 2HP Extender	148.8mm x 10.5mm x 13.6mm	10
Each Kit Includes: - 10 2HP Extender Packets			
Each Packet Includes: - Front Panel Assembly with Label and Foam Gaskets - 2 Clips - Instruction Sheet			

sales@xtech-outside.com
358 North Street, Randolph, MA 02368
www.XTech-Outside.com
US Sales: 1-888-444-1644
China Sales: 86-592-5765365

Visit www.xtech-outside.com



WWW.XTECH-OUTSIDE.COM | 1 - 8 8 8 - 4 4 4 - 1 6 4 4