

REV	DESCRIPTION	DRW	APR	DATE
A	PRODUCTION RELEASE, ECO 3783	TM	ML	03/19/10
B	CHANGE TOP TAB LOCATION, ECO 3888	TM	ML	09/27/10

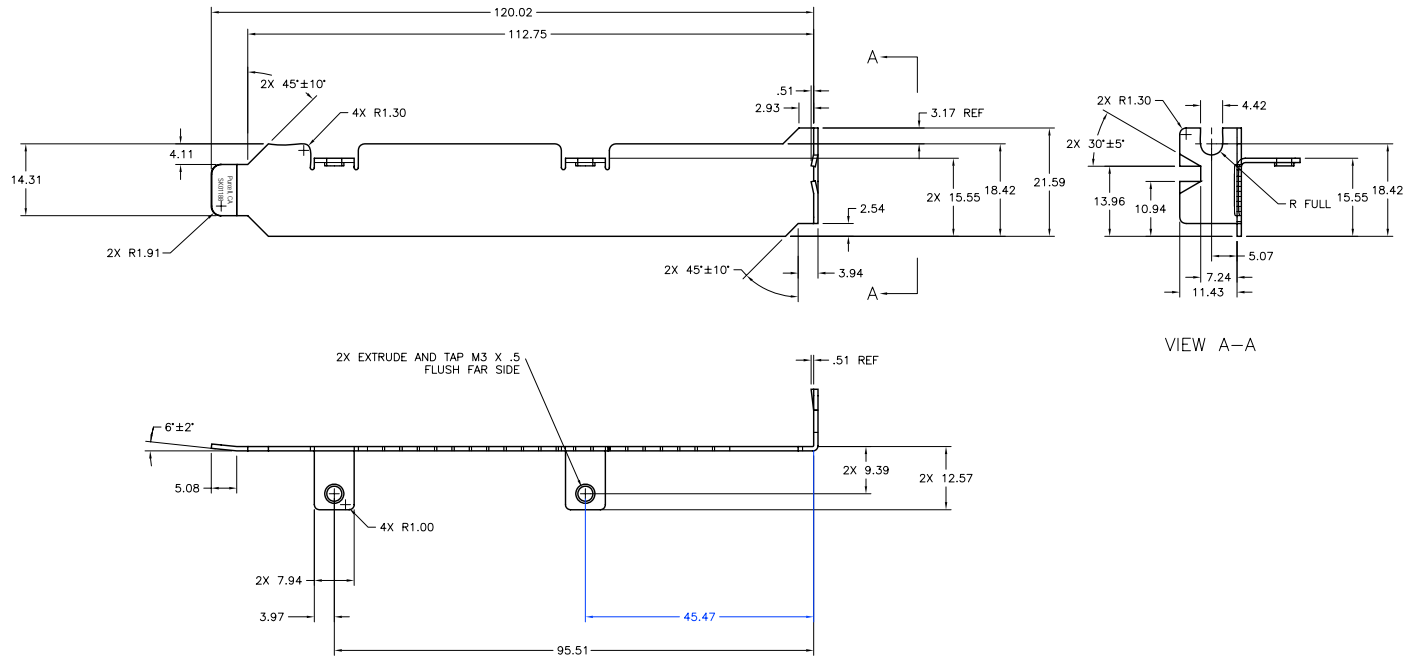
NOTES: UNLESS OTHERWISE SPECIFIED

1. INTERPRET DIMENSIONS AND TOLERANCES PER ASME Y14.5M-1994.

2. MATERIAL: .034" THK (20GA) C1010/1020 CRS;
FINISH: BRIGHT NICKEL

3. ALL BENDS 90° UNLESS OTHERWISE STATED.

4. DEBURR AND BREAK SHARP EDGES .4 MM MAX.



PROPRIETARY STATEMENT THIS DOCUMENT CONTAINS INFORMATION THAT IS PROPRIETARY TO PURCELL TECHNOLOGIES INC. REPRODUCTION, DISCLOSURE, OR USE OF THE CONTENTS OF THIS DOCUMENT IS EXPRESSLY PROHIBITED WITHOUT PRIOR WRITTEN AUTHORIZATION BY PURCELL TECHNOLOGIES INC.		TOLERANCES STD ± .25 RAD ± .25 DIA ± .25 MAT ± .10 ANG ± 1° DIMS IN Millimeters		MATERIAL: SEE NOTES FINISH: BRIGHT NICKEL COSMETIC CLASS: CLASS C COSMETIC INSPECTION: TABLE II RoHS COMPLIANT (Y/N): YES LEAD FREE (Y/N): NO		DESCRIPTION BRACKET, PCI, 2X TAB, BLANK	
FORMAT DOCUMENT NO: QR300012 Rev A				161 SAND CREEK ROAD BRENTWOOD, CA 94513 PHONE (925) 513-4200 FAX (925) 513-1370 WWW.PURCELLTECH.COM		DRAWING NO. P1323-0000	
CUSTOMER: NONE						REV B	
CUSTOMER PIN NONE						SCALE: 1:1 THIRD ANGLE PROJECTION	
						SHEET 1 OF 1	